



THE WALKER

2 BEDROOMS | STUDY | 2 BATHROOMS

1,955 SQUARE FEET

W Westharbor Homes

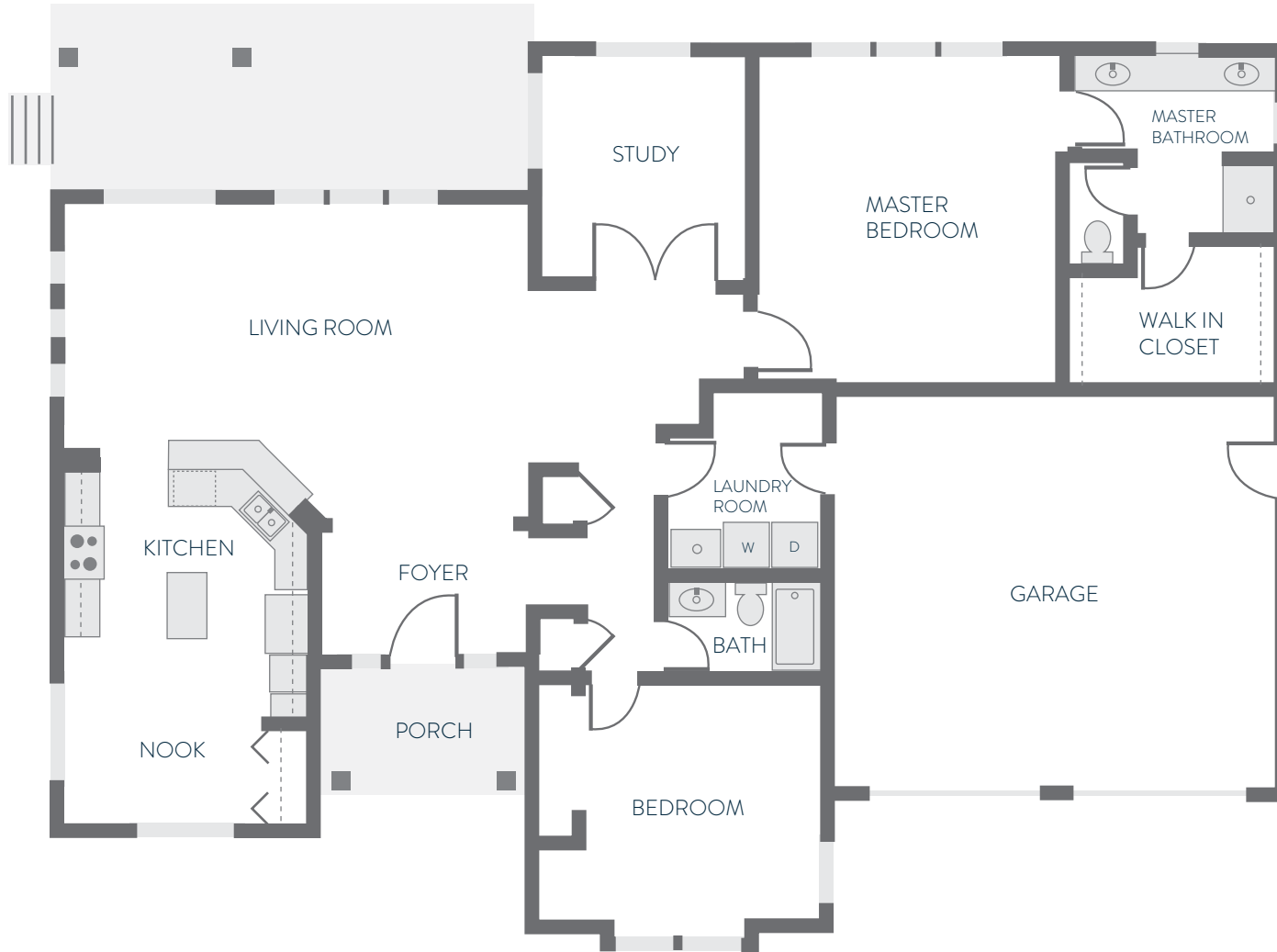
Disclaimer: In our continuing effort to improve the design and function of the home through the development process dimensions, finishes, prices and specifications are subject to change without notice. Square footages are approximate. Use floor plan as a guide only. Buyer to verify to their own satisfaction.



OLYMPIC TERRACE II

A Neighborhood by Westharbor Homes

362 MT. CONSTANCE WAY
PORT LUDLOW, WA 98365
WESTHARBORHOMES.COM



THE WALKER

2 BEDROOMS | STUDY | 2 BATHROOMS

1,955 SQUARE FEET



Disclaimer: In our continuing effort to improve the design and function of the home through the development process dimensions, finishes, prices and specifications are subject to change without notice. Square footages are approximate. Use floor plan as a guide only. Buyer to verify to their own satisfaction.

